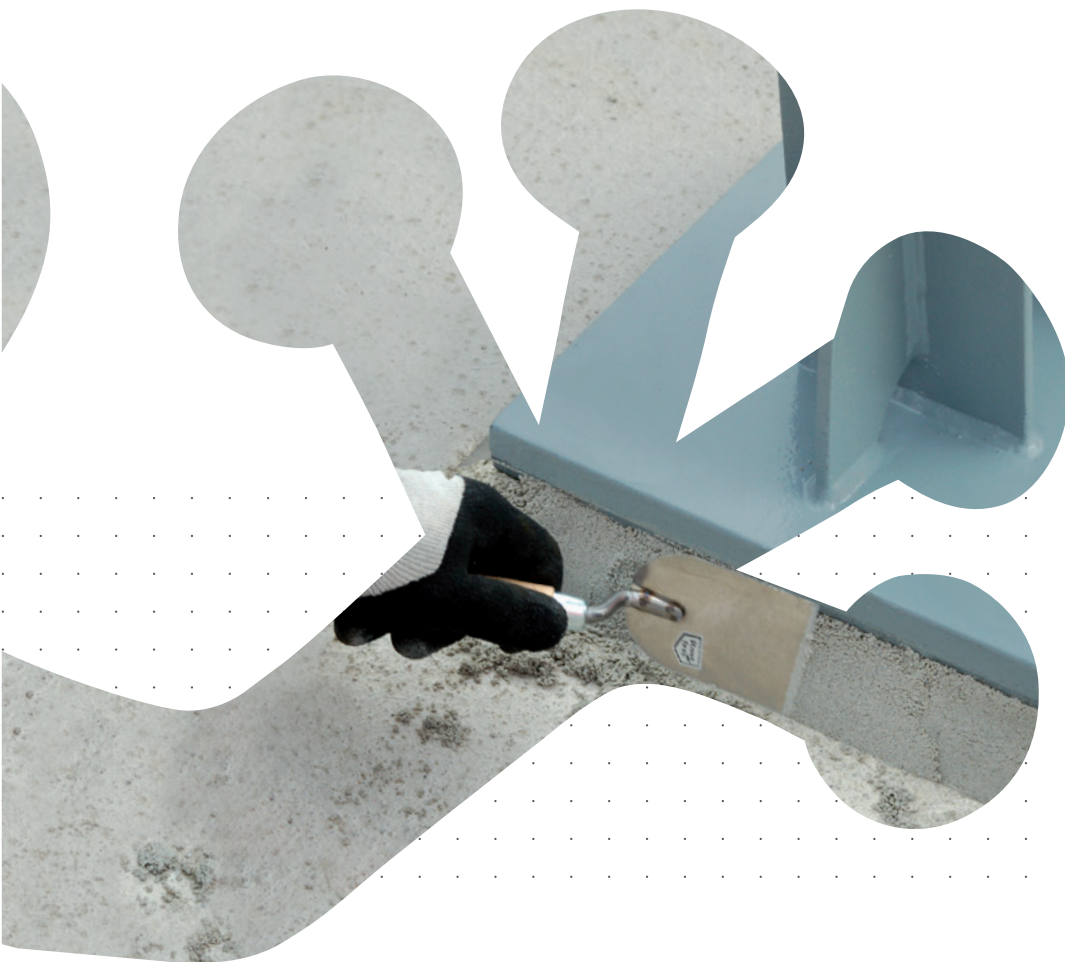


Renovate · Build · Protect

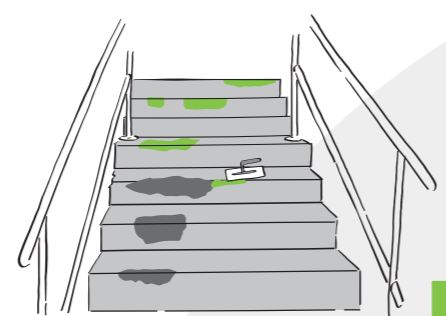
Highly resilient PRC-Mortar
for traffic and industrial
surfaces



1 cds-V-Mortar

Mechanically highly resilient
2-component epoxy resin mortar for concrete repairs, frost and de-icing salt resistant, fuel resistant

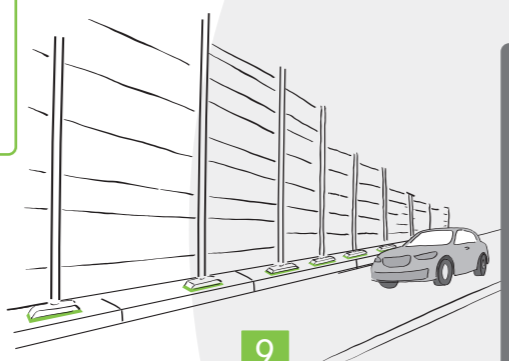
Application examples:
Repair and restoration of concrete damage (indoors and outdoors) in chemically contaminated areas



2 cds-Mortar 0-1 FB

2-component epoxy resin repair mortar, very easy to model even with thin layer thicknesses

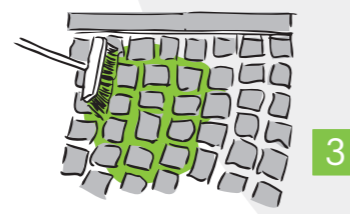
Application examples:
Renovation of kerbs and stairs, production of coverings and ramps



3 cds-Mortar 0-3 P ST

Heavy-duty paving joint mortar based on epoxy resin for high-strength jointing of paving surfaces

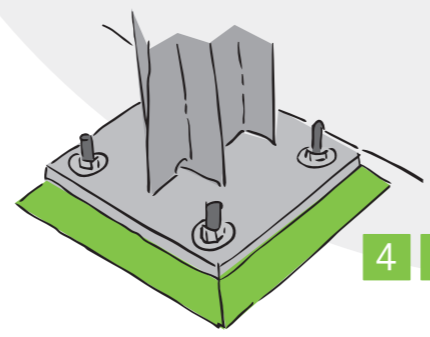
Application example:
Jointing of paved surfaces



4 cds-Mortar BA

2-component epoxy resin mortar for concrete repair in accordance with ZTV ING

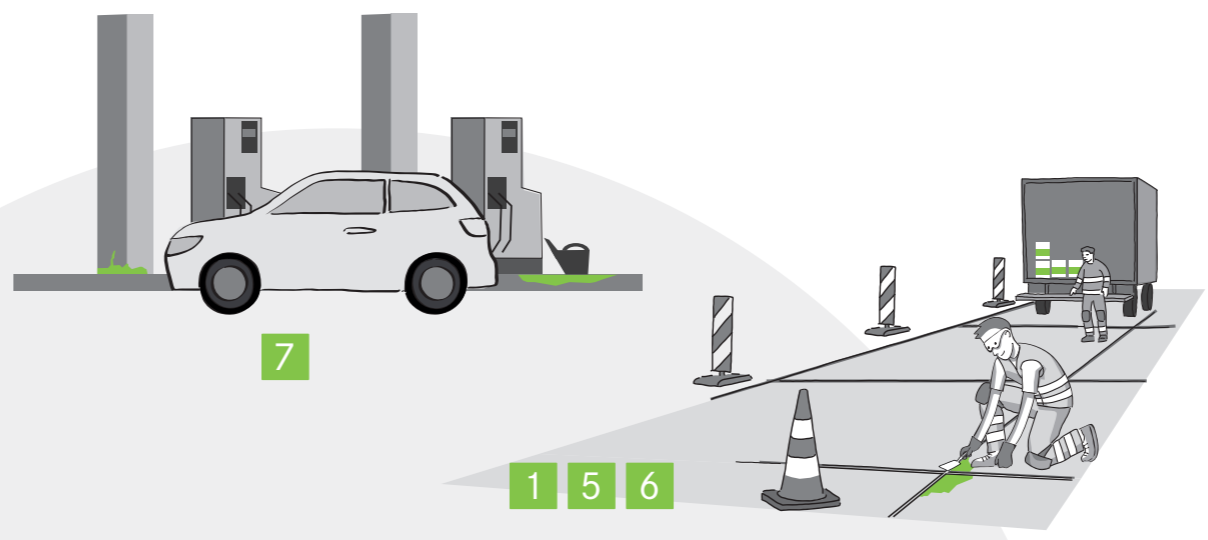
Application examples:
Underlayment noise protection walls and base plates for noise barriers and railings, foundation and plinth construction for machines and production plants



cds-PRC-Mortar – durable building material for heavily stressed constructions and infrastructure surfaces

The benefits for your project:

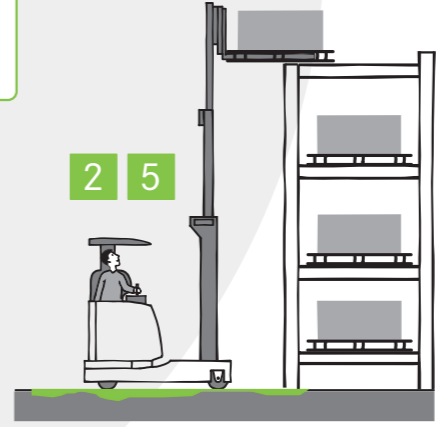
- Sustainable and reliable repair and value conservation
- High compressive strength, good chemical resistance
- Time saving due to short curing times
- On-site advice from the cds sales representatives
- No post-treatment required



1 5 6



1 5 6



2 5



2 6

cds-Mortar LS

2-component epoxy resin mortar with high compressive strength (> 90 N/mm²)

Application examples:
Underlaying of base plates, foundation construction

cds-Mortar 0-3 L flex special

2-component epoxy resin mortar for concrete repairs, deep surface damage or concrete edges. Chemically and mechanically resistant in traffic areas

Application examples:
Repair of deep surface damage, edge restoration

cds-Mortar 11 rapid

Fast-curing 2-component epoxy resin mortar for concrete repairs even at low temperatures

Application examples:
Concrete repairs with focus on very short curing time

cds-Mortar WHG

2-component epoxy resin mortar for concrete maintenance of concrete sealing surfaces, e.g. in systems for storing, filling and handling water-polluting substances or gas stations

Application example:
Systems for storing, filling and handling water-polluting substances

cds-V-Mortar flex stable

Pigmented, internally flexibilized with special stone granulation
2-component epoxy resin mortar

Application example:
Filling of recesses of railing post installation

cds-PRC-Mortar – long term value preservation

Although concrete is resistant, it is not indestructible. Especially in industry and infrastructure, damage, signs of wear and tear occur over the course of the life cycle. Here, cds PRC-Mortars offering optimum solutions for repairing the affected surfaces. Whether mechanically heavily loaded highways or runways or chemical attacks in storage systems, filling and handling water-polluting substances: cds Polymere offers the

right product for every problem, without waiting times and post-treatment. Many years of practical experience, continuous further development and permanent production controls guarantee the technical properties and thus the sustainability of the repair work carried out. Our experienced field service staff will also be happy to advise you on site.

cds-PRC-Mortar overview

Product	Compressive strength [N/mm ²]	Bending tensile strength [N/mm ²]	Temperature range [°C]	Curing times at 20 °C ** [h]	Layer thickness single layer [mm]	Special features
cds-Mortar 0-3 L flex special	> 50	> 20	5 - 35	4 - 18	3 - 40	fulfills the requirements of TL/TP BEB according to ZTV BEB-Stb 15; resistant to gasoline and diesel***
cds-Mortar 11 rapid	> 70	> 20	1 - 30	4	3 - 10*	Fast curing***
cdsMortar 0 - 1 FB	> 60	> 20	5 - 30	4 - 15	1 - 40	Easy to model, can be pulled out to "zero", good stability***
cds-V-Mortar	> 100	> 30	5 - 30	4 - 15	4 - 40	Resistant to fuels, oils, de-icing salts and other media according to the test list; Use in permanently wet areas***
cds-Mortar WHG	> 100	> 30	8 - 30	6	4 - 40	General technical approval approval for concrete maintenance in storage systems, filling and handling waterpolluting substances, very high compressive strength, high chemical resistance, externally monitored according to DIN EN 1504-3 System 2+***
cds-V-Mortar flex stable	> 40	> 25	5 - 30	8 - 18	4 - 40	Fulfills the requirements of the BAST guideline drawings Gel 12, 13, 14***
cds-Mortar BA	> 90	> 25	8 - 30	15	4 - 40	PRC reaction resin concrete according to ZTV-ING 3-4; fulfills the requirements of the BAST guideline drawings LS 1,2,5 and ELT 2***
cds-Mortar LS	> 90	> 35	5 - 35	4 - 15	4 - 40	Fulfills the requirements of the BAST guideline drawings LS 1,2 and Spl 1,2***
cds-Mortar 0-3 P ST	> 50	> 25	12 - 30	24	≥ 30	Durable due to high strength, drainable adjustable, suitable for trucks***

*higher layer thicknesses possible due to thinning **when specifying time periods, there are different hardener variants with different curing times, values based on 20 °C ***meets the requirements of DIN EN 1504-3, class R4

The latest version of the technical data sheets apply, which can be viewed at www.cds-polymere.de.



cds Polymere GmbH & Co. KG
www.cds-polymere.de

Tel. +49 6701 9350-0
Fax +49 6701 9350-50
info@cds-polymere.de

Gau-Bickelheimer Straße 72
55576 Sprendlingen/Rhh.
Germany

